

from April 2003

Gaelic Greeting

from April 2003, pages 28 and 29.

According to our sources, the first word in this design, GEUD, can be spelled either GEAD (Irish spelling) or GEUD (Scottish spelling).

If you decided to spell it with an "a", substitute the "a" from Failte for the "u".



Dragonfly Fantasy Sampler

from April 2003, page 30 and 31.

- #10029 Bright Sage Mill Hill Magnifica Bead is placed in the vines at the top, center, and bottom of design area.
- #10074 Purple Passion Mill Hill Magnifica Bead is placed next to the x's.



Faith Looks Up

from April 2003, pages 35, 36, and 37.

French Knots - DMC 300 or Anchor 352 - small flowers



Pink Floral Table Topper

from April 2003, pages 38 and 39.

Add: + symbol = Anchor 802/DMC 727, Topaz, Vy. Lt.

Backstitching should read:

Note: Anchor 310/DMC 434 is NOT used in this piece.

Anchor 39/DMC 309, Blossom Pink, Dk.; Backstitch - buds

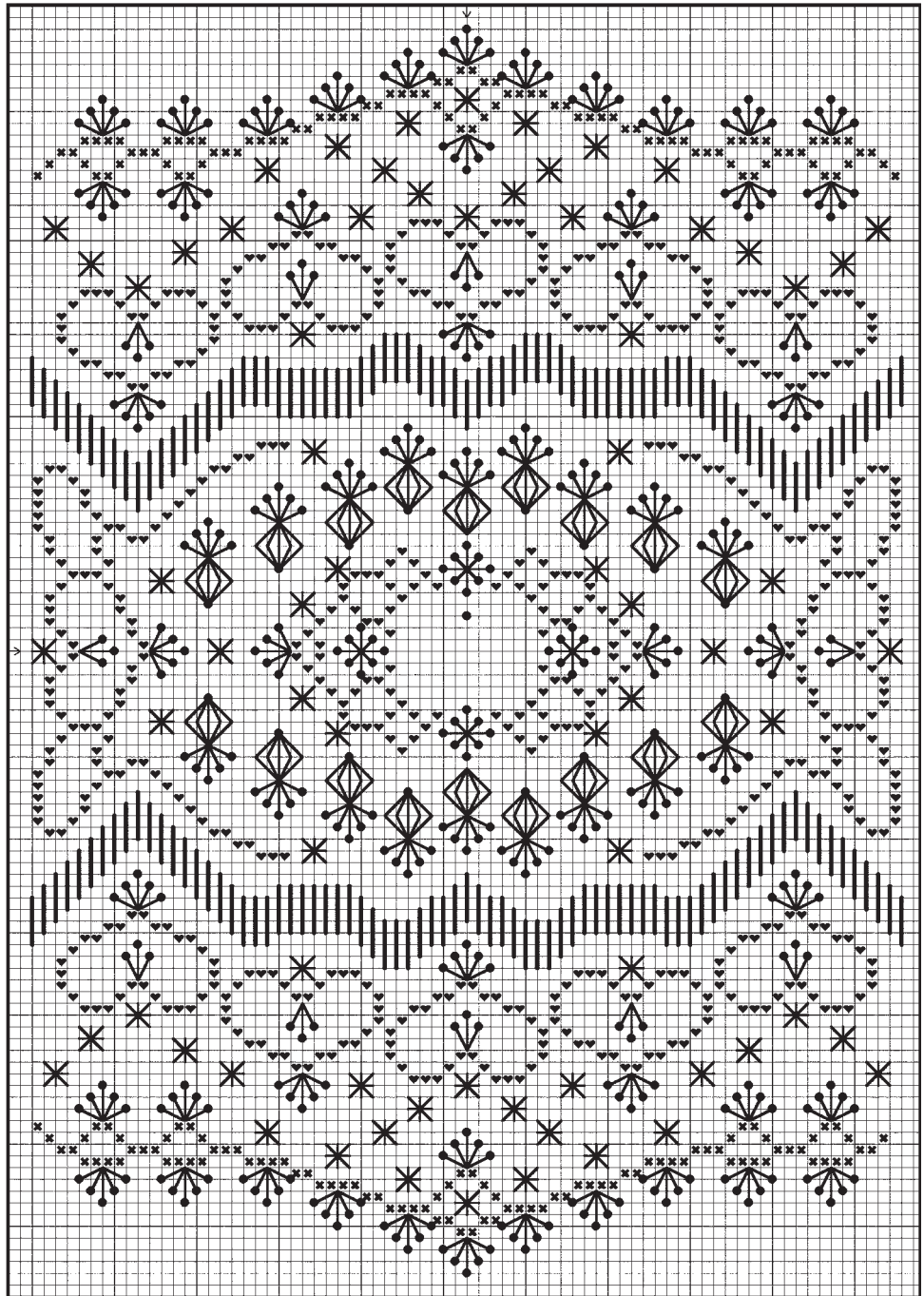
Anchor 149/DMC 336, Delft Blue, Med. Dk.; Backstitch - berries

Anchor 306/DMC 3820, Topaz, Med. Lt.; Backstitch - center of flowers

Anchor 1044/DMC 895, Grass Green, Ultra Dk.; Backstitch - leaves and stems

Reflections of 1927

from April 2003,
page 47.



38 ♥	Waterlily - Morning Mist
PA08 ✕	Rainbow Gallery Patina
38 └	Waterlily - Morning Mist; Backstitch - inside hearts and point of bead
72010 └	Small Bugle Beads; Backstitch
PA08 *	Rainbow Gallery Patina; Backstitch - above and below " X "
102C └	Kreinik #4 Braid; Algerian Eyelet
03042 *	Mill Hill Antique Glass Beads
Ecrú •	Ecrú/Off-White (2 strands); Attach Antique Glass Beads and Glass Treasure Charm (12214)

Project Shown:

28-count Bone Lugana - Zweigart®
6-strand Embroidery Floss - DMC®
Morning Mist Waterlily - Caron Collection
Patina® (PA08) - Rainbow Gallery
#4 Gold Braid - Kreinik®
Mill Hill Antique Glass Beads/Small Bugle Beads (03042/72010) -
Gay Bowles Sales, Inc.
Mill Hill Glass Treasure Charm (12214) - Gay Bowles Sales, Inc.
12" x 45" fabric of choice
Tassel